

Cable ID: TESTCABLE5E

Test Summary: PASS

Date / Time: 12/30/2002 06:48:42pm
 Headroom: 13.4 dB (NEXT 12-78)
 Test Limit: TIA Cat 5e Channel
 Cable Type: UTP 100 Ohm Cat 5e
 Fault Anomaly Threshold: 15%

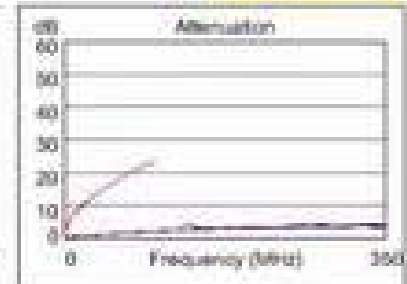
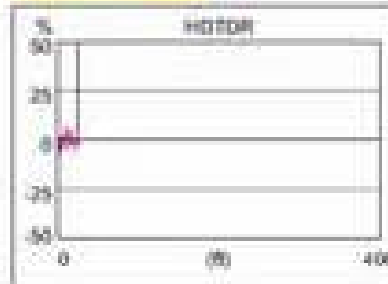
Operator: AZ
 Software Version: 4.006
 Limits Version: 5.12
 NVP: 69.0%
 Shield Test: N/A

Model: DSP-4100
 Main S/N: 7626011
 Remote S/N: 7626011
 Main Adapter: LIA 013
 Remote Adapter: LIA 012

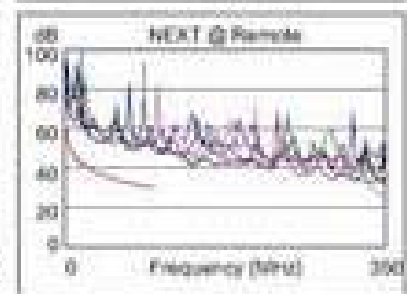
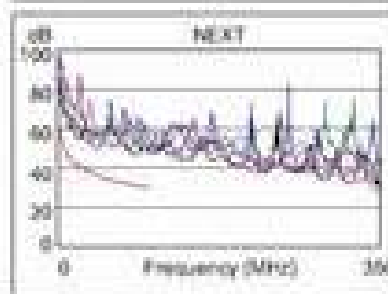
Wire Map	1 2 3 4 5 6 7 8 S
PASS	
	1 2 3 4 5 6 7 8



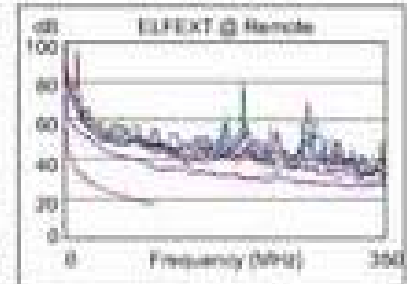
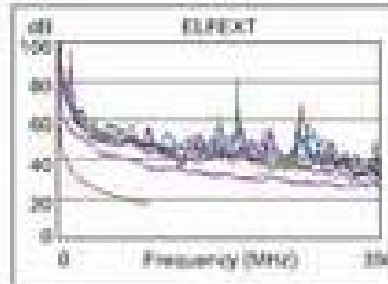
Length (ft), Limit 328	[Pair 12]	24
Prop. Delay (ns), Limit 555	[Pair 12]	36
Delay Skew (ns), Limit 50	[Pair 12]	0
Resistance (ohms)		N/A
Attenuation (dB)	[Pair 36]	21.5
Frequency (MHz)	[Pair 36]	100.0
Limit (dB)	[Pair 36]	24.0



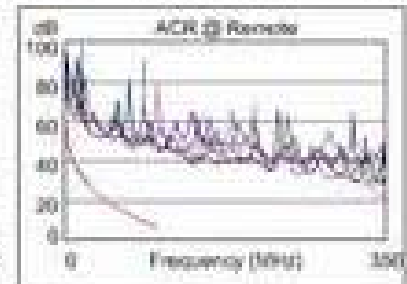
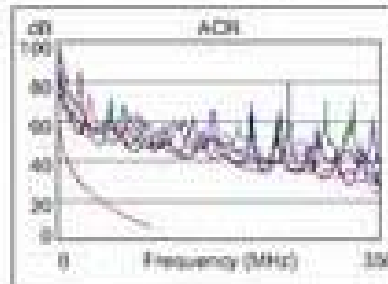
	Worst Case Margin		Worst Case Value	
PASS	MAIN	SR	MAIN	SR
Worst Pair	12-78	12-45	12-78	12-78
NEXT (dB)	13.4	15.6	15.2	18.0
Freq. (MHz)	42.2	5.2	64.0	100.0
Limit (dB)	36.5	51.7	31.3	30.1
Worst Pair	12	78	78	78
PSNEXT (dB)	13.8	15.3	15.6	18.0
Freq. (MHz)	20.7	34.2	60.8	100.0
Limit (dB)	38.8	35.1	28.7	27.1



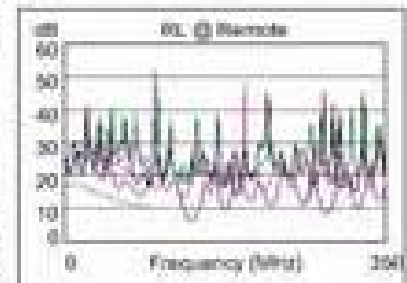
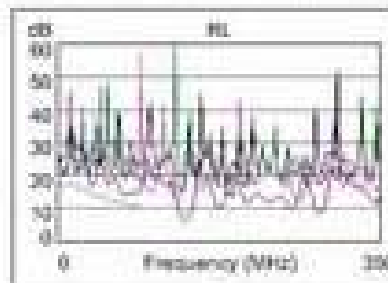
PASS	MAIN	SR	MAIN	SR
Worst Pair	45-12	45-12	45-12	12-45
ELFEXT (dB)	17.1	17.1	17.8	17.9
Freq. (MHz)	1.1	1.1	100.0	100.0
Limit (dB)	56.6	56.6	17.4	17.4
Worst Pair	12	45	12	45
PSELFEXT (dB)	19.8	19.9	20.1	19.9
Freq. (MHz)	1.1	100.0	100.0	100.0
Limit (dB)	53.6	14.4	14.4	14.4



PASS	MAIN	SR	MAIN	SR
Worst Pair	12-45	12-45	12-78	12-78
ACR (dB)	17.8	19.4	35.0	39.8
Freq. (MHz)	2.0	2.9	64.4	100.0
Limit (dB)	55.3	52.1	9.4	6.0
Worst Pair	12	45	78	78
PSACR (dB)	18.9	19.9	35.0	39.8
Freq. (MHz)	2.0	2.9	60.8	100.0
Limit (dB)	52.3	49.1	7.2	3.0



PASS	MAIN	SR	MAIN	SR
Worst Pair	12	12	12	12
RL (dB)	14.7	15.5	14.7	15.5
Freq. (MHz)	100.0	100.0	100.0	100.0
Limit (dB)	0.0	0.0	0.0	0.0



Compliant Network Standards

10BASE-T	100BASE-Tx	100BASE-T4
100BASE-T	ATM-25	ATM-51
ATM-155	100VG-AryLan	IR-F
TR-15 Active	TR-15 Passive	